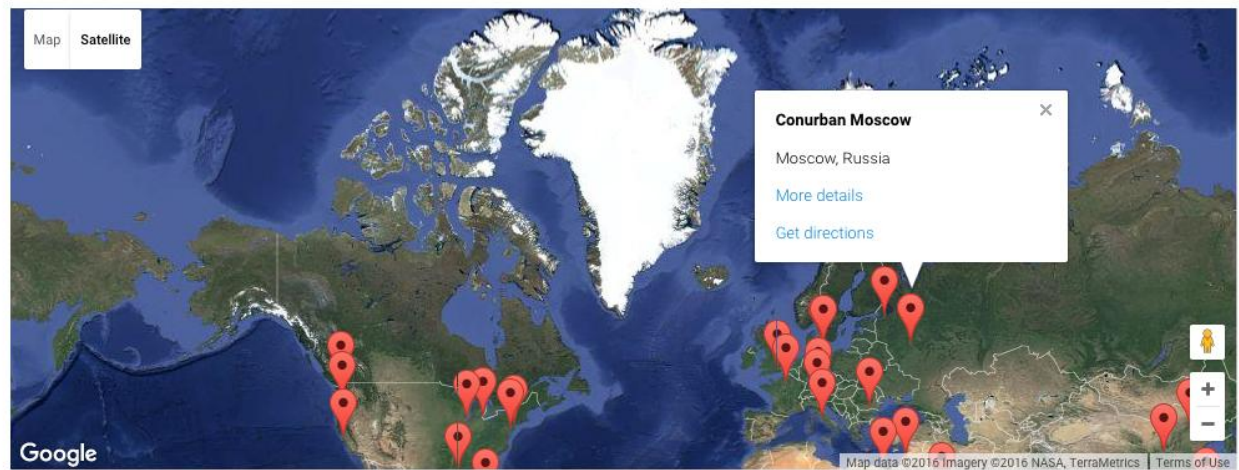




MUSEUM
of the City

Exhibits Worldwide

Filter by All ▾



**How the Museum of the City
interprets the urban cultural landscape
for urban planning**



The image features a background of an aerial cityscape with a prominent red vertical overlay. The text 'MUSEUM of the City' is positioned on the left side of the red overlay. On the right side, there is a vertical navigation menu with a light yellow background and a thin orange border at the top. The menu items are listed vertically, with 'City Planning' highlighted in a light grey box.

MUSEUM *of the City*

Ancient Cities

Architecture

Art in the City

City History

City Planning

Contemporary Cities

Culture in Cities

Food

Future Cities

Health

Immigration

Industry

Lecture Hall

Natural Spaces

Portland, Oregon

Recreation

Stories & Legends

Sustainability

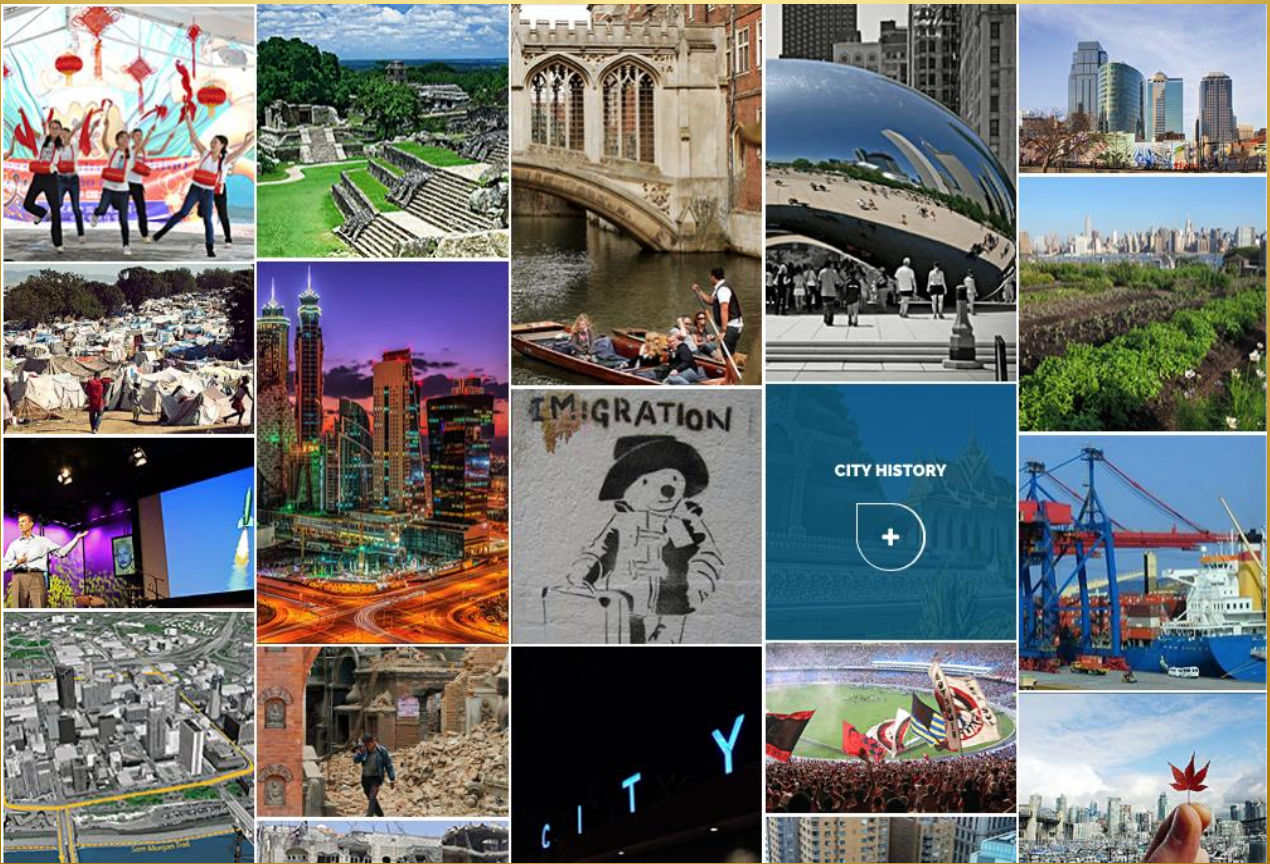
Trade

Transportation

Urban Recovery

War & the City

Galleries



Ancient

MUSEUM
of the City

Galleries  Register | Log In 



Ancient Cities



The Degradation of Rome



The Civilization of Rapa Nui



Cahokia: The Native American City of Mounds

[About the Museum](#)
[Partners of the Museum](#)
[Museum Board](#)
[Donate to the Museum of the City](#)

Sustainability in Ancient Rome



Palenque and Ancient Mayan Cities

Contemporary

MUSEUM
of the City

Galleries ▾ Register | Log In 🔍

Contemporary Cities





Malmö – the City of Tomorrow

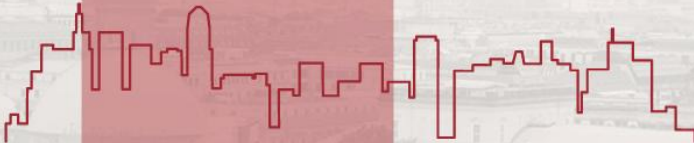


Sustainability of Conurban Moscow

Culture

MUSEUM
of the City

Galleries ▼ Register | Log In 🔍



City Cultures



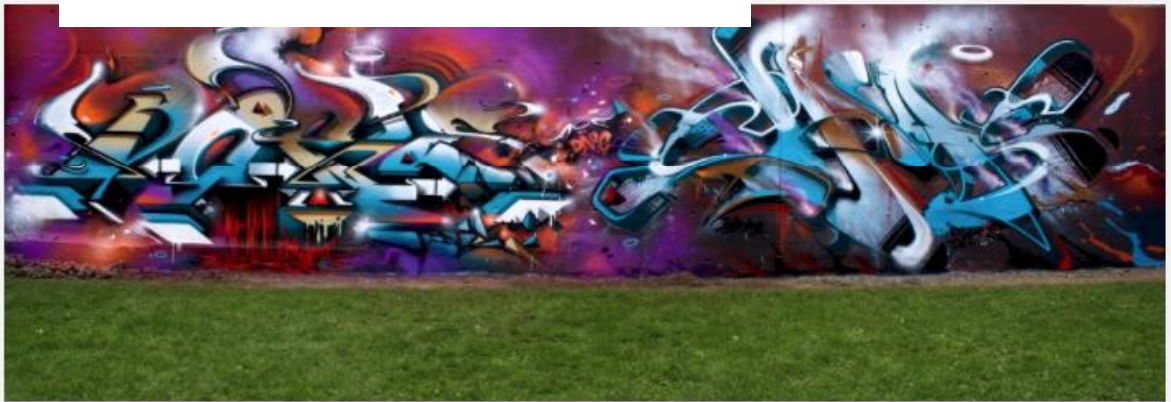
Classical Composers' Influence on European Cities



African American Culture in New Orleans

Art

Graffiti: Art or Vandalism?



Graffiti Wall in Basel, Switzerland. Artist: DOES and CHAS

Innovation



Layla Betti on Innovative Space

Clinker Motel – Ex Italcementi Trento 2005 – 2013

Exhibit by: Layla Betti



Ian Jones on Transportation

Cycling in London

Exhibit by: Ian Jones



How we are changed



New Understandings



CAMOC

MUSEUM
of the City

[Galleries](#) ▾ [Register](#) | [Log In](#) 🔍



CAMOC, the International Committee for the Collections and Activities of Museums of Cities, was formed in 2005. It owes its origins to the initiative of Moscow City Museum and museum professionals in other countries who felt the need for an international network of colleagues who focus on museums of the city.



ATHENS CITY MUSEUM



EXPOMUS



GLASGOW MUSEUMS



MECHELEN MUSEA



KRAKOW MUSEUM

M H K



MUSEUM VICTORIA



SINGAPORE NHB



ST. PETERSBURG



STADSMUSEET



How CAMOC members can use the Museum of the City



Invitation to Exhibit

Create
an
Exhibit

[Register](#) | [Log In](#)

Register

Users can register themselves or you can manually create users here. 

Username

*

Email *

Country *

Password *

Minimum length of 7 characters

Strength indicator

Exhibit Builder Tutorial

Building an Exhibit for the Museum of the City



[FAQ](#)

[Exhibit Considerations](#)

[Set up an Account](#)

[Prepare your Visuals \(Photos\) \(Videos\)](#)

[Build your Exhibit](#)

[Submit your Exhibit](#)



The City as Seen Through the Eyes of its Citizens