

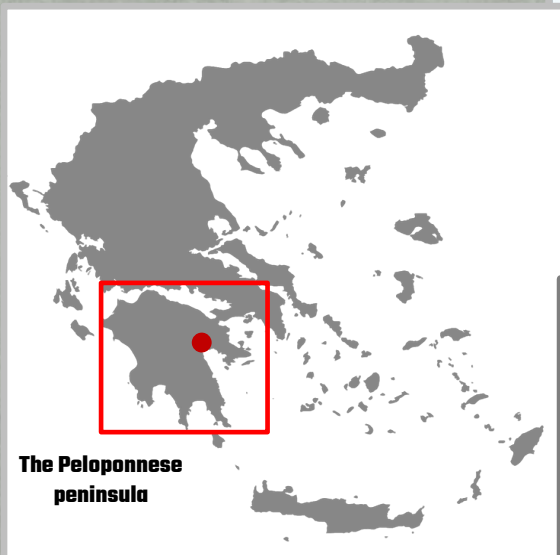
**WHERE THE ORANGE TREES GROW.
A CHALLENGING CULTURAL LANDSCAPE IN ARGOLID, GREECE**

Stefanos Keramidas¹

Directorate of Museums, Hellenic Ministry of Culture and Sports

¹stefanosker@gmail.com

The regional unit of ARGOLID



Where the orange trees grow ~ Stefanos Keramidas

The topography of Argolid



Where the orange trees grow ~ Stefanos Keramidas

Cultivation of olive trees



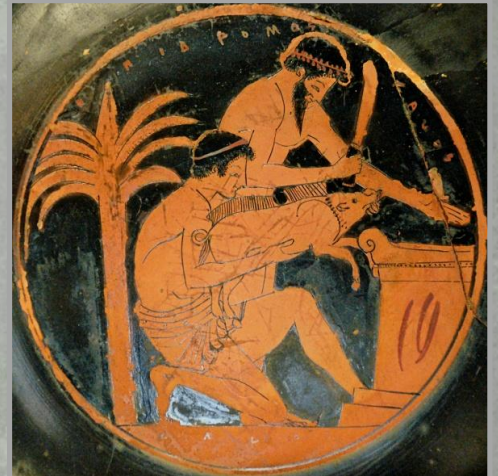
Where the orange trees grow ~ Stefanos Keramidas

Cultivation of fruits and seeds



Where the orange trees grow ~ Stefanos Keramidas

Animal farming



Where the orange trees grow ~ Stefanos Keramidas

Orange festival in the city of Argos 1965-1968

ΕΟΡΤΗ ΠΟΡΤΟΚΑΛΙΟΥ



Video adapted from and available at <https://www.youtube.com/watch?v=2Xjy9-9ajBw>

Where the orange trees grow ~ Stefanos Keramidas

The transformation of the Argive plain



Where the orange trees grow ~ Stefanos Keramidas

The consequences for the agricultural landscape

- **The variety of the cultivated plants and trees in the area was minimized to citrus trees**
- **Old species diminished or disappeared**
- **Traditional practices and accumulated agricultural knowledge were eliminated**
- **Uncontrolled expansion of orange orchards, even in unsuitable areas**
- **Deterioration of the water horizon of the region.**

The urban landscape of Argolid

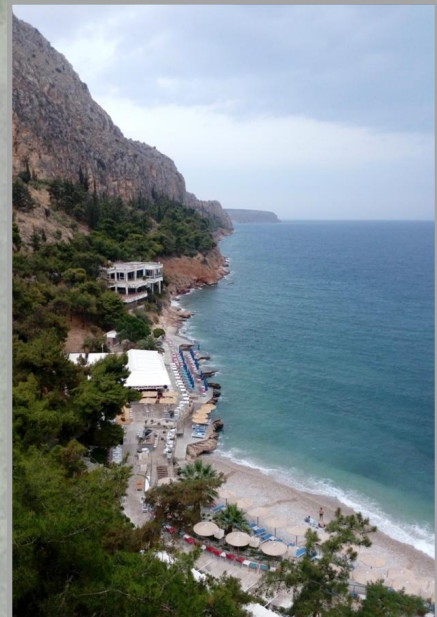
a. The city of Nafplio



The uncontrolled expansion of the city of Nafplio



The touristic “explosion” of the city of Nafplio



The threats for the city of Nafplio

- **Excessive need for resort accommodation and varied leisure facilities**
- **Uncontrolled commercialization of the land**
- **Falsified inflation of property prices**
- **Gradual desertion of the old city from its usual population**
- **Empty urban shell, in the service of tourism and economic profit**

Where the orange trees grow ~ Stefanos Keramidas

The urban landscape of Argolid

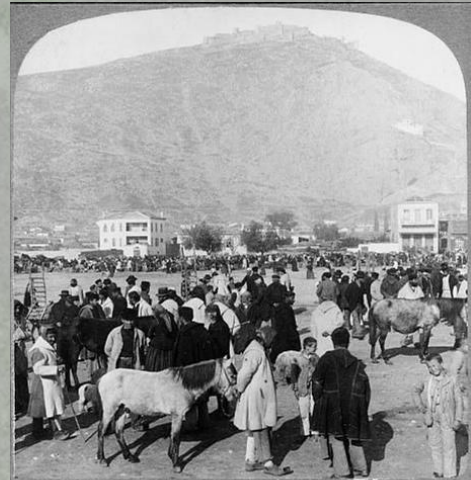
b. The city of Argos



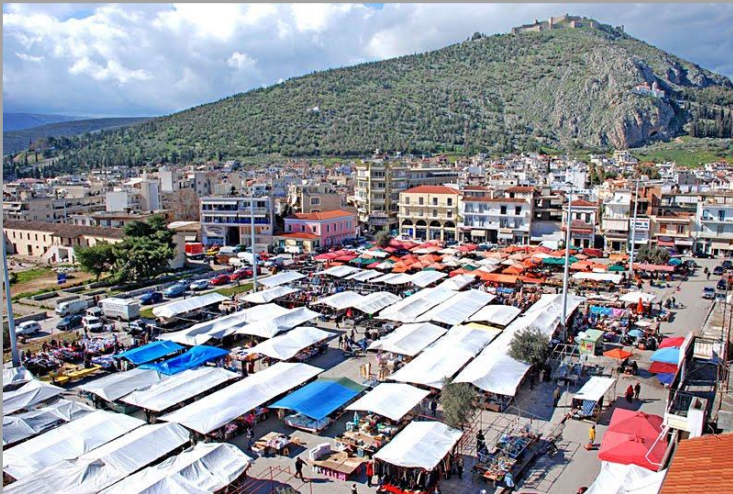
The rich historical background of the city of Argos



The rural character of the city of Argos



(77) The Larisa, or ancient Citadel (950 ft. high) W. from Market Place, Argos, Greece.
Copyright 1909 by Underwood & Underwood.



The risks for the city of Argos

- **Uncontrollably expanding urbanisation**
- **Intense pressure on the varied monuments and sites within and around the city**
- **Imposing, eccentric modern infrastructures that do not follow the rhythm of the urban landscape**
- **Homogenised architectural expression that neglects the cultural essence of the city**

Where the orange trees grow ~ Stefanos Keramidas

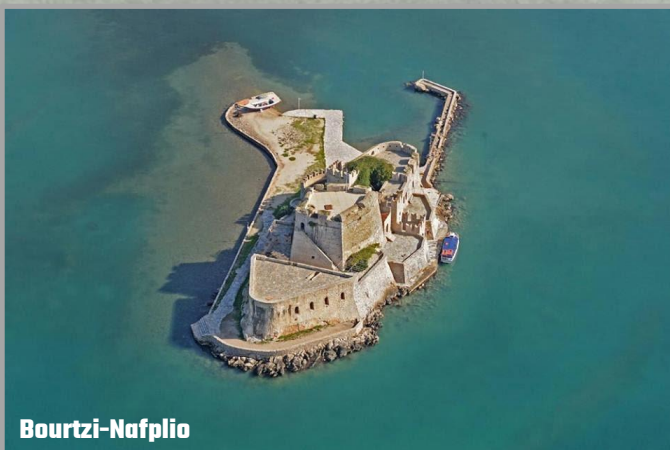
The cultural content of Argolid

Habitation since Paleolithic times in the Franchthi cave



Where the orange trees grow ~ Stefanos Keramidas

The cultural content of Argolid



Museums in Argolid

1. Archaeological museum of Mycenae
2. Archaeological museum of Argos
3. Archaeological museum of Nafplio
4. Archaeological museum of Epidaurus
5. Byzantine museum of Argolid (Argos)
6. National Gallery department (Nafplio)
7. Army museum (Nafplio)
8. Peloponnesian folklore institution
museum (Nafplio)
9. Childhood museum (Nafplio)
10. Municipal art gallery (Nafplio)



and



Museums in Argolid

11. Alpha bank cultural centre (Nafplio)
12. Evagellistria ecclesiastic museum (Nafplio)
13. The "fougaro"- The funnel art gallery (Nafplio)
14. Automotive museum (Nafplio)
15. Katsiomitis museum of natural history (Ligourio)
16. Folklore museum (N.Kios)
17. Historical-folklore museum (Ermioni)
18. Centre for folklore (Kranidi)
19. Centre for folklore (Didyma)
20. Museum of toys (Ermioni)



Alpha bank cultural center



Evagellistria ecclesiastic museum



Fougaro

A few suggestions for active museums
within their cultural landscape

- ◆ **Focus should be given in the interpretive content of exhibitions and the presentation of landscape qualities**
- ◆ ◆ **Events and programmes that museum organise should incorporate aspects of natural environment to their approach and implementation**
- ◆ ◆ ◆ **The realization of the aforementioned programmes outside the museum and within the natural environment can offer an inspiring perception on museum objects and their background**
- ◆ ◆ ◆ ◆ **Cooperation is a necessity. Local communities, municipal authorities, the representatives of educational organisations, and experts from other disciplines have to be approached by museums. The collaboration with these partners is the only way to secure a holistic approach to the problematic of cultural landscape.**

Where the orange trees grow ~ Stefanos Keramidas

Thank you for your attention!



Where the orange trees grow ~ Stefanos Keramidas